

UFF-DA!

Useful Facts and Figures-Data for Affiliates!

October 2011

Resources Distributed to Affiliates FY 11

As part of our mission statement, Habitat for Humanity of Minnesota (HFH-MN) articulates our role as a “resource development and support organization.” We want to share how we have been doing in this area. Below is an overview of the resources distributed during Fiscal Year 2011 (FY 11) to Minnesota Habitat affiliates under each of our programs. We **distributed \$4,283,085 to Minnesota affiliates with 91% of affiliates participating** in at least one HFH-MN program. See Table 1 on the reverse side of this report for full detail by affiliates.

AT A GLANCE: How Resources Were Distributed

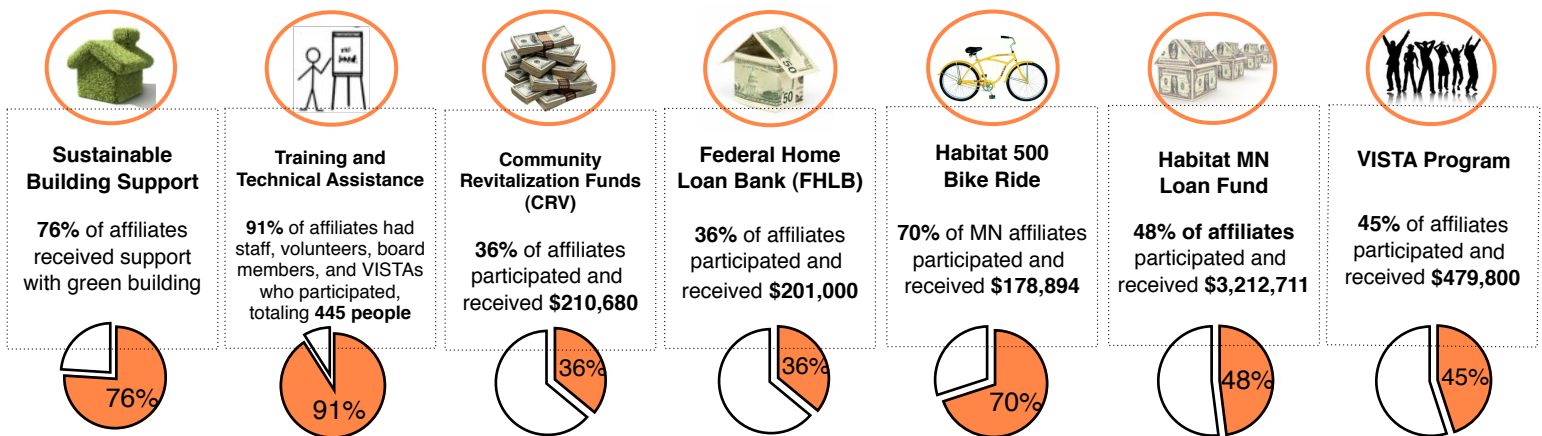
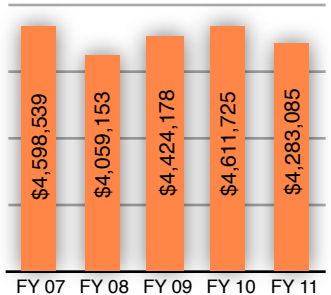


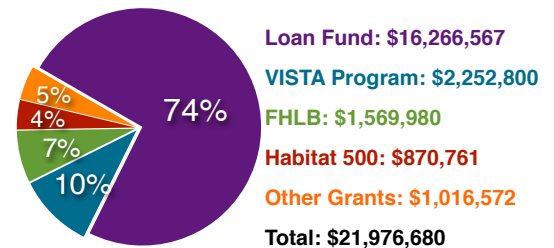
CHART 1: Resources Distributed by FY



Total: \$21,976,680

To provide some perspective on how FY 11 compares to our history of support, we illustrate in **Chart 1** that HFH-MN has distributed nearly **\$22 million** to Minnesota Habitat affiliates during the past five fiscal years. By far, we have distributed the greatest amount of resources through our **Loan Fund (Chart 2)**.

CHART 2: FY 07 - FY 11 Funding Totals by Program



HFH-MN Announces \$135,000 USDA RCDI Grant!

HFH-MN just completed the process of obtaining a three-year, \$135,000 grant from the US Department of Agriculture’s (USDA) Rural Community Development Initiative (RCDI). The resources from this grant are dedicated to 21 affiliates whose offices are located in rural areas (as defined by the USDA). The funds were requested for support of our Training and Technical Assistance Program and have been awarded to accomplish **two main goals**:

- 1) to increase affiliate housing production and the number of families served annually, and
- 2) to increase affiliate capacity to apply and qualify for the various funding programs HFH-MN offers.

With this funding, HFH-MN will be able to significantly expand our training and technical assistance offerings to affiliates in **six focus areas**: Board Development, Family Services, Financial Management, Fundraising, Green Building, and ReStore Operations.

The HFH-MN Board and staff review the **Resources Distributed Table** (see below) carefully each year to ascertain that as many affiliates are participating in as many HFH-MN programs as possible. We evaluate the reasons for each affiliate where no or few dollars are shown as having been disbursed.

- Did an affiliate not build a home that year?
- Is there something about the homes an affiliate is building that makes them ineligible for our funding?
- Is there something about our programs that needs adjustment so that more affiliates can participate?

TABLE 1: Resources Distributed FY 11

Affiliate	Sustainable Building Support	Training & TA (# of people)	CRV	FHLB	Habitat 500	Habitat MN Loan Fund	VISTA	Total
Aitkin County	yes	9			\$1,541	\$40,000		\$41,541
Big Stone Lake Area								\$0
Central MN	yes	23			\$3,975	\$185,000	\$60,000	\$248,975
Crookston Area	yes	5				\$35,000		\$35,000
Crow River	yes	16			\$7,786		\$15,000	\$22,786
Detroit Lakes Area					\$9,476			\$9,476
Douglas County	yes	42	\$20,800	\$9,000		\$143,390		\$173,190
East Central MN	yes	1	\$19,600	\$50,000	\$3,227			\$72,827
Fergus Falls Area	yes	5						\$0
Freeborn / Mower Co.	yes	3			\$9,750		\$15,000	\$24,750
Goodhue County	yes	16	\$17,000		\$2,211	\$50,000	\$33,200	\$102,411
Itasca County	yes	17	\$13,800	\$9,000	\$2,902	\$81,000		\$106,702
La Crosse Area	yes	11			\$5,793		\$30,000	\$35,793
Lake Agassiz	yes	42				\$81,000	\$51,400	\$132,400
Lakes Area	yes	25	\$14,200	\$18,000	\$983		\$15,000	\$48,183
Leaf River Area	yes	1			\$2,428	\$60,500		\$62,928
Martin & Faribault Co.	yes	8			\$3,366			\$3,366
Minnesota Valley		2						\$0
Morrison County	yes	6		\$9,000	\$1,022	\$45,500		\$55,522
North St. Louis Co.	yes	25	\$10,500	\$18,000	\$58,351	\$140,684	\$36,400	\$263,935
Northwoods	yes	25	\$11,800	\$9,000	\$2,519	\$60,000	\$36,400	\$119,719
Prairie Lakes		8		\$9,000				\$9,000
Red River Valley		1						\$0
Redwood River					\$870			\$870
Rice County	yes	14	\$19,680	\$34,000	\$3,327	\$135,000	\$21,400	\$213,407
Rochester Area	yes	20	\$32,300	\$9,000	\$3,262		\$18,200	\$62,762
South Central MN	yes	28	\$21,000	\$18,000		\$193,540	\$15,000	\$247,540
Southwestern MN		2						\$0
Steele-Waseca Areas	yes	10	\$20,000		\$821	\$65,000		\$85,821
Twin Cities		11			\$36,189	\$1,763,659	\$51,400	\$1,851,248
West Central MN	yes	37	\$10,000		\$2,654		\$30,000	\$42,654
Western Lake Superior	yes	10			\$15,072			\$15,072
Winona County	yes	22		\$9,000	\$1,369	\$133,438	\$51,400	\$195,207
Total to MN Affiliates	25	445	\$210,680	\$201,000	\$178,894	\$3,212,711	\$479,800	\$4,283,085
Total to HFH-MN		37			\$18,750		\$78,200	\$96,950
Total to Other Habitat	25	10			\$106,008			\$106,008
Total to Non-Habitat		115						
Grand Total	50	607	\$210,680	\$201,000	\$303,652	\$3,212,711	\$558,000	\$4,486,043

These are all questions that get asked and answered on an annual basis.

It should be noted that each program has its own set of funder based guidelines and requirements for participation. We strive to keep programs simplified and straight forward and do not add requirements that are not funder directed.

With that said, we recognize that our programs do have complexities to them and would like to help **facilitate greater participation in programs by connecting affiliates who are very active in our programs with those interested in getting more involved in HFH-MN programs. Please contact Jan for more information (Jan@hfhmn.org).**

Additional information about each of our programs is available on our website under "Affiliate Programs" at www.hfhmn.org.

Save the date!

OLE Statewide Conference

March 7th - 9th, 2012

New this year, the OLE Conference will be held Wednesday to Friday at the DoubleTree in Rochester.

